

# 2022 年湖南省音乐类专业全省统一考试视唱考试曲目

(简谱 100 条)

1.

1 = D  $\frac{4}{4}$

0 6 3. 1 234 3 |  $\sharp$ 5 7 64 323. |

21 2 3 6 4 4 3 2 | 7123 3  $\sharp$ 5 6 - ||

2.

1 =  $\flat$ B  $\frac{4}{4}$

1. 2 3 5 6 $\sharp$ 56 1 | 7. 6 562 3 - |

55 6 1 4 35 6 2 | 0 3 2 3 2 2 175 6 ||

3.

1 =  $\flat$ E  $\frac{4}{4}$

3. 1 7 2 1217 6 | 6. 7 5 4 3 - |

4 6 76 $\sharp$ 56 32. 0 1 | 7 1 2 2. 7 6 - ||

4.

1 = A  $\frac{4}{4}$

2 2 3 5 16 2 $\sharp$ 12 3 | 6 5 3. 2 3 1. |

0 6 2 3 1 76 5 | 0 61 4 3 2 - ||

5.

$$1 = G \quad \frac{4}{4}$$

$$\underline{\underline{2}} \quad \underline{\underline{2}} \quad \underline{\underline{35}} \quad \underline{\underline{1}} \quad \underline{\underline{76}} \quad \underline{\underline{5}} \quad | \quad \underline{\underline{6}} \quad \underline{\underline{6}} \quad \underline{\underline{6435}} \quad \underline{\underline{2^{\#}12}} \quad |$$

$$\underline{\underline{5}} \quad \underline{\underline{1}} \quad \underline{\underline{23}} \quad \underline{\underline{47}} \quad \underline{\underline{2}} \quad \underline{\underline{6}} \quad | \quad \underline{\underline{3}} \quad \underline{\underline{2}} \quad \underline{\underline{2761}} \quad \underline{\underline{5}} \quad - \quad ||$$

6.

$$1 = {}^bB \quad \frac{4}{4}$$

$$5 \quad \underline{\underline{\dot{1}.}} \quad \underline{\underline{\dot{2}}} \quad \underline{\underline{\dot{3}}} \quad \underline{\underline{76}} \quad \underline{\underline{5}} \quad | \quad \underline{\underline{6}} \quad \underline{\underline{4}} \quad \underline{\underline{32}} \quad \underline{\underline{345}} \quad |$$

$$\underline{\underline{0}} \quad \underline{\underline{6^{\#}5}} \quad \underline{\underline{6}} \quad \underline{\underline{\dot{1}}} \quad \underline{\underline{4.}} \quad \underline{\underline{3}} \quad \underline{\underline{2}} \quad | \quad \underline{\underline{5}} \quad \underline{\underline{\dot{2}}} \quad \overset{3}{\underline{\underline{7}}} \quad \underline{\underline{6}} \quad \underline{\underline{5}} \quad \underline{\underline{\dot{1}}} \quad - \quad ||$$

7.

$$1 = C \quad \frac{4}{4}$$

$$\underline{\underline{5.}} \quad \underline{\underline{3}} \quad \underline{\underline{6}} \quad \underline{\underline{5}} \quad \underline{\underline{2432}} \quad \underline{\underline{1.}} \quad \underline{\underline{2}} \quad | \quad \underline{\underline{3}} \quad \underline{\underline{56}} \quad \underline{\underline{7}} \quad \underline{\underline{\dot{2}}} \quad \underline{\underline{635}} \quad |$$

$$\underline{\underline{0}} \quad \underline{\underline{\dot{1}}} \quad \underline{\underline{\dot{2}.}} \quad \underline{\underline{6}} \quad \underline{\underline{5^{\#}45}} \quad \underline{\underline{5}} \quad \underline{\underline{3}} \quad | \quad \underline{\underline{2356}} \quad \overset{3}{\underline{\underline{3}}} \quad \underline{\underline{2}} \quad \underline{\underline{6}} \quad \underline{\underline{1}} \quad - \quad ||$$

8.

$$1 = D \quad \frac{4}{4}$$

$$6 \quad \underline{\underline{7.}} \quad \underline{\underline{\dot{2}}} \quad \underline{\underline{\dot{1}.}} \quad \underline{\underline{76}} \quad | \quad \underline{\underline{\#5}} \quad \underline{\underline{6}} \quad \underline{\underline{{}^b5}} \quad \underline{\underline{4}} \quad \underline{\underline{3}} \quad - \quad |$$

$$\underline{\underline{0}} \quad \underline{\underline{2}} \quad \underline{\underline{34}} \quad \overset{3}{\underline{\underline{6}}} \quad \underline{\underline{1}} \quad \underline{\underline{2}} \quad \underline{\underline{3}} \quad | \quad \underline{\underline{7}} \quad \underline{\underline{4}} \quad \underline{\underline{3.}} \quad \underline{\underline{\#5}} \quad \underline{\underline{6}} \quad - \quad ||$$

9.  $1 = {}^bB \quad \frac{4}{4}$

$$5. \quad \underline{\dot{1}} \quad \underline{\dot{3}} \underline{\underline{\dot{2}\dot{3}}} \underline{\dot{1}} \underline{7} \quad | \quad \underline{6} \underline{4} \quad \underline{\underline{32}} \underline{5.} \quad \underline{\#5} \quad |$$

$$\underline{6.} \underline{\dot{2}} \underline{\dot{1}} \underline{76} \overset{3}{\underline{5 \ 4 \ 5}} \underline{3} \quad | \quad \underline{4 \ 7} \quad \underline{\underline{7656}} \underline{\dot{1}} \quad - \quad ||$$

10.  $1 = D \quad \frac{4}{4}$

$$\underline{3.} \underline{4 \ 5} \underline{1} \quad \underline{7 \ 6} \underline{5} \quad | \quad \underline{0} \underline{\underline{43}} \underline{2 \ 6} \quad \underline{\underline{71}} \underline{3} \underline{2} \quad |$$

$$\underline{0} \underline{\underline{34}} \underline{5 \ 1} \quad \underline{7 \ 6^\#5} \underline{6} \quad | \quad \underline{\underline{64}} \underline{3 \ 2} \underline{6} \quad \underline{7.} \underline{5} \underline{1} \quad ||$$

11.  $1 = D \quad \frac{4}{4}$

$$\underline{2.} \underline{1 \ 2} \underline{5} \quad \underline{\underline{3532}} \underline{1.} \underline{7} \quad | \quad \underline{6} \underline{6} \quad \underline{\underline{056\dot{1}}} \underline{5} \quad - \quad |$$

$$6 \quad \underline{4 \ 3} \quad \underline{2.} \underline{5 \ 7} \underline{1} \quad | \quad \underline{1 \ 23} \quad \overset{3}{\underline{6 \ 5 \ 6}} \underline{1} \quad - \quad ||$$

12.  $1 = {}^bE \quad \frac{4}{4}$

$$\underline{5} \quad \underline{1 \ 2} \quad \underline{3.} \underline{4 \ 5} \underline{1} \quad | \quad \underline{\underline{234}} \quad \overset{3}{\underline{4\dot{1}76}} \underline{5} \quad - \quad |$$

$$\underline{\underline{\dot{1}6}} \underline{\dot{1}} \underline{7 \ 5} \quad \underline{4.} \underline{6 \ 5} \overset{3}{\underline{4 \ 3}} \quad | \quad \underline{2^\#} \underline{\underline{12}} \underline{3 \ 6} \quad \underline{5} \quad - \quad ||$$

13.

$$1 = {}^b E \quad \frac{4}{4}$$

$$\begin{array}{l} \underline{3} \quad \underline{\dot{6}} \quad \underline{\underline{6543}} \quad \underline{5} \quad 2 \quad \underline{3} \quad | \quad \underline{1} \cdot \quad \underline{2} \quad \overset{3}{\underline{3 \quad 7 \quad 6}} \quad \underline{\underline{535}} \cdot \quad | \\ \underline{0} \quad \dot{1} \quad \underline{7} \quad \underline{\dot{6}} \quad \underline{\underline{5643}} \quad 2 \quad | \quad \underline{5} \quad \underline{\dot{6}} \quad \underline{\underline{12}} \quad \underline{\dot{5}} \quad - \quad || \end{array}$$

14.

$$1 = {}^b B \quad \frac{4}{4}$$

$$\begin{array}{l} \underline{\dot{1}} \quad \underline{7} \quad \underline{\underline{6}} \cdot \quad \underline{3} \quad 5 \cdot \quad \underline{6} \quad | \quad \underline{4} \quad \underline{\underline{32}} \quad \underline{1} \quad \underline{3} \quad \underline{\underline{2}} \cdot \quad \underline{\underline{12}} \cdot \quad | \\ \underline{6} \quad \underline{\dot{2}} \quad \underline{\underline{0176}} \quad \underline{\underline{56}} \quad \underline{1} \quad \underline{3} \quad \overbrace{\quad \quad \quad} \quad | \quad \underline{\underline{32}} \quad \underline{\underline{6}} \quad \underline{5} \quad \underline{\underline{23}} \quad \underline{1} \quad - \quad || \end{array}$$

15.

$$1 = E \quad \frac{4}{4}$$

$$\begin{array}{l} 2 \quad \underline{5} \quad \underline{6} \quad \underline{5} \quad \underline{\underline{43}} \quad 2 \quad | \quad \underline{6} \cdot \quad \underline{5} \quad \underline{\underline{4532}} \quad \underline{\underline{161}} \quad \underline{2} \quad | \\ \underline{3} \quad \dot{1} \quad \underline{6} \quad \underline{\underline{56}} \quad \underline{1} \quad \underline{2} \cdot \quad \underline{\underline{2}} \quad | \quad \underline{3} \quad \underline{\dot{6}} \quad \underline{2} \quad \underline{\underline{16}} \quad \underline{\dot{5}} \quad - \quad || \end{array}$$

16.

$$1 = G \quad \frac{4}{4}$$

$$\begin{array}{l} \underline{1} \quad \underline{\dot{5}} \quad \underline{1} \quad \underline{\underline{23}} \quad 5 \cdot \quad \underline{\underline{32}} \quad | \quad \underline{1} \cdot \quad \underline{2} \quad \underline{\dot{7}} \quad \underline{\dot{6}} \quad \underline{\dot{5}} \quad - \quad | \\ \underline{\dot{6}} \cdot \quad \underline{\dot{7}} \quad \underline{1} \quad \underline{6} \quad \overset{3}{\underline{5 \quad 4 \quad 3}} \quad 2 \quad | \quad \underline{\dot{5}} \quad \underline{\dot{5}} \quad \overset{\quad}{\underline{\underline{\underline{5672}}}}} \quad \underline{1} \quad - \quad || \end{array}$$

17.

$$1 = F \quad \frac{4}{4}$$

1234 5 31 6 46 5    | 6. 5 4 3 2    -    |

2 3 4 3 6 5 42 3    | 4 7 3. 2 1    -    ||

18.

$$1 = D \quad \frac{4}{4}$$

3 23 1. 6 5.    1    | 6 56 43 5 2    -    |

5. 3 235 3 21 6 5    | 2 2376 1    -    ||

19.

$$1 = F \quad \frac{4}{4}$$

3 3 1 6 4. 3 2    | 7121 7. 5 3    -    |

6. 7 1 6 6543 2    | 3 1 7 6. 5 6    -    ||

20.

$$1 = F \quad \frac{4}{4}$$

3 5 5 32 1 23 2    | 5. 6 16 3 2    -    |

2. 1 23 5. 6 12 1 6    | 2 3 16 5    -    ||

21.

$$1 = F \quad \frac{4}{4}$$

1     3. 4 565     3     |     4 3     2 71 2     -     |

3 5     13 2 1 7 6     |     5724 3. 2 1     -     ||

22.

$$1 = F \quad \frac{4}{4}$$

6 7     1 2     3 24 3     |     6 #56 4 2     3     -     |

2. 3 4 2     6 #56 7     |     7 3 #5 7     6     -     ||

23.

$$1 = F \quad \frac{4}{4}$$

5.     4     3. 2 1     |     2     2346 5.     #45     |

6 6     4. 6 54 5 3     |     16 7     4     32 1.     ||

24.

$$1 = F \quad \frac{4}{4}$$

1 3     5 43 2 3     5     |     6 4     3. 1 3 2.     |

4. 6 5 4     35 4 3 6     |     5 4     72     1     -     ||

25.

$$1 = G \quad \frac{4}{4}$$

$$\begin{array}{l} \underline{1.} \quad \underline{\underline{2}} \quad \underline{\underline{3}} \quad \underline{\underline{1}} \quad \underline{\underline{5}} \quad \underline{\underline{65}} \quad \underline{\underline{3}} \quad | \quad \underline{\underline{234}} \quad \underline{\underline{71}} \quad \underline{\underline{2}} \quad \underline{\underline{5.}} \quad | \\ \underline{\underline{6.}} \quad \underline{\underline{7}} \quad \underline{\underline{1}} \quad \underline{\underline{3}} \quad \underline{\underline{5}} \quad \underline{\underline{64}} \quad \underline{\underline{2}} \quad \frown \quad | \quad \underline{\underline{2}} \quad \underline{\underline{7}} \quad \underline{\underline{43^\#23}} \quad \underline{\underline{1}} \quad - \quad || \end{array}$$

26.

$$1 = F \quad \frac{4}{4}$$

$$\begin{array}{l} \underline{\underline{1}} \quad \underline{\underline{23}} \quad \underline{\underline{5}} \quad \underline{\underline{4}} \quad \underline{\underline{32}} \quad \underline{\underline{7}} \quad \underline{\underline{5}} \quad | \quad \underline{\underline{6}} \quad \underline{\underline{2}} \quad \underline{\underline{43}} \quad \underline{\underline{2^\#12.}} \quad | \\ \underline{\underline{6}} \quad \underline{\underline{5}} \quad \underline{\underline{42}} \quad \underline{\underline{3}} \quad \underline{\underline{71}} \quad \underline{\underline{6}} \quad | \quad \underline{\underline{7}} \quad \frown \quad \underline{\underline{7432}} \quad \underline{\underline{1}} \quad - \quad || \end{array}$$

27.

$$1 = F \quad \frac{4}{4}$$

$$\begin{array}{l} \underline{\underline{1}} \quad \underline{\underline{3.}} \quad \underline{\underline{4}} \quad \underline{\underline{565}} \quad \underline{\underline{3}} \quad \frown \quad | \quad \underline{\underline{34}} \quad \underline{\underline{2}} \quad \underline{\underline{3}} \quad \underline{\underline{1}} \quad \underline{\underline{765.}} \quad | \\ \underline{\underline{6}} \quad \underline{\underline{6}} \quad \underline{\underline{4.}} \quad \underline{\underline{5}} \quad \underline{\underline{6}} \quad \underline{\underline{0432}} \quad | \quad \underline{\underline{5}} \quad \underline{\underline{7}} \quad \underline{\underline{3}} \quad \underline{\underline{23}} \quad \underline{\underline{1}} \quad - \quad || \end{array}$$

28.

$$1 = A \quad \frac{4}{4}$$

$$\begin{array}{l} \underline{\underline{26}} \quad \underline{\underline{2}} \quad \underline{\underline{32}} \quad \underline{\underline{1}} \quad \underline{\underline{76}} \quad \underline{\underline{5}} \quad | \quad \underline{\underline{6}} \quad \underline{\underline{1}} \quad \underline{\underline{5}} \quad \frown^3 \quad \underline{\underline{4}} \quad \underline{\underline{3}} \quad \underline{\underline{5}} \quad \underline{\underline{2.}} \quad | \\ \underline{\underline{25}} \quad \underline{\underline{6}} \quad \underline{\underline{0}} \quad \underline{\underline{1}} \quad \underline{\underline{2}} \quad \underline{\underline{32}} \quad \underline{\underline{1.}} \quad \underline{\underline{7}} \quad | \quad \underline{\underline{6}} \quad \underline{\underline{2}} \quad \frown \quad \underline{\underline{216^\#4}} \quad \underline{\underline{5}} \quad - \quad || \end{array}$$

29.

$$1 = F \quad \frac{4}{4}$$

$$3. \quad \underline{\underline{2}} \quad \underline{\underline{1.}} \quad \underline{\underline{7.}} \quad \underline{\underline{6.}} \quad \underline{\underline{5.}} \quad | \quad \underline{\underline{6.}} \quad 2 \quad \underline{\underline{4}} \quad 3 \quad - \quad |$$

$$\underline{\underline{6.}} \quad \underline{\underline{6.}} \quad \underline{\underline{5.}} \quad \underline{\underline{6.}} \quad \underline{\underline{3436.}} \quad 1 \quad | \quad 0 \quad \underline{\underline{73.}} \quad \overset{3}{\underline{\underline{2.1.7.}}} \quad \underline{\underline{6.}} \quad - \quad ||$$

30.

$$1 = F \quad \frac{4}{4}$$

$$\underline{\underline{6.}} \quad 3 \quad \underline{\underline{23}} \quad \underline{\underline{5.}} \quad 3. \quad | \quad \underline{\underline{56}} \quad \underline{\underline{6.}} \quad \overset{\frown}{\underline{\underline{6.}}} \quad \underline{\underline{12}} \quad 3 \quad - \quad |$$

$$\underline{\underline{6.}} \quad 2 \quad \overset{\#}{\underline{\underline{12}}} \quad \underline{\underline{5.}} \quad 2 \quad \underline{\underline{35}} \quad | \quad \overset{3}{\underline{\underline{1.2.3.}}} \quad \overset{3}{\underline{\underline{2.1.5.}}} \quad \underline{\underline{6.}} \quad - \quad ||$$

31.

$$1 = F \quad \frac{4}{4}$$

$$\underline{\underline{3.}} \quad \underline{\underline{4.}} \quad \underline{\underline{5.}} \quad \underline{\underline{6.}} \quad \underline{\underline{4.}} \quad \underline{\underline{32.}} \quad 1 \quad | \quad \underline{\underline{2.}} \quad \underline{\underline{3.}} \quad \overset{3}{\underline{\underline{4.7.6.}}} \quad 5 \quad - \quad |$$

$$\underline{\underline{6.}} \quad \overset{\#}{\underline{\underline{56.}}} \quad \underline{\underline{6.}} \quad 3 \quad \underline{\underline{23}} \quad \underline{\underline{1.}} \quad \underline{\underline{7.}} \quad \underline{\underline{6.}} \quad | \quad \underline{\underline{5.}} \quad 4 \quad \underline{\underline{3432.}} \quad 1 \quad - \quad ||$$

32.

$$1 = G \quad \frac{4}{4}$$

$$1. \quad \underline{\underline{5.}} \quad \underline{\underline{1712.}} \quad 3 \quad | \quad \underline{\underline{2.}} \quad \underline{\underline{34.}} \quad \overset{3}{\underline{\underline{3.2.1.}}} \quad \overset{\#}{1} \quad 2 \quad - \quad |$$

$$\underline{\underline{2.}} \quad \underline{\underline{6.}} \quad \underline{\underline{2.}} \quad \underline{\underline{4345.}} \quad 6 \quad \overset{\frown}{\quad} \quad | \quad \underline{\underline{6.}} \quad 4 \quad \underline{\underline{7.}} \quad \underline{\underline{2.}} \quad 1 \quad - \quad ||$$



33.

$$1 = G \quad \frac{4}{4}$$

$$\underline{\underline{34}} \underline{\underline{5}} \quad \underline{1} \quad \underline{\underline{64}} \underline{\underline{32}} \quad \left| \quad \overset{3}{\underline{521}} \quad \underline{\underline{71}} \quad \underline{\underline{52}} \cdot \quad \right|$$

$$\underline{\underline{6\cdot}} \underline{\underline{7\cdot}} \quad \underline{16} \quad \underline{5} \underline{\underline{42}} \underline{3} \quad \left| \quad \underline{\underline{7\cdot124}} \quad \underline{32} \quad \underline{21} \cdot \quad \right\|$$

34.

$$1 = G \quad \frac{4}{4}$$

$$\underline{1\cdot} \underline{\underline{236}} \quad \underline{\underline{5321}} \quad \left| \quad \underline{\underline{23}} \underline{4} \quad \underline{\underline{7132}} \cdot \quad \right|$$

$$\underline{4\cdot} \underline{\underline{326}} \quad \underline{\underline{5123}} \quad \left| \quad \overset{3}{\underline{\underline{567}}} \quad \underline{431} \quad - \quad \right\|$$

35.

$$1 = C \quad \frac{4}{4}$$

$$\underline{5\cdot} \underline{\underline{2\dot{1}}} \underline{\underline{76\dot{1}}} \underline{5\cdot} \quad \left| \quad \underline{\underline{6\dot{1}}} \underline{\underline{432}} \quad \underline{\underline{5^{\#}45}} \cdot \quad \right|$$

$$\underline{6} \underline{\underline{0\dot{1}}} \underline{54} \quad \underline{\underline{32352}} \quad \left| \quad \underline{0} \underline{4} \quad \underline{\underline{56}} \underline{\underline{7\cdot}} \underline{\underline{231}} \quad \right\|$$

36.

$$1 = C \quad \frac{4}{4}$$

$$\underline{5} \underline{\underline{6\dot{1}}} \underline{65} \quad \underline{\underline{35231}} \quad \left| \quad \underline{\underline{6}} \underline{6} \quad \underline{2} \quad \underline{\underline{345}} \cdot \quad \right|$$

$$\underline{\dot{1}} \underline{6} \quad \underline{4} \underline{\underline{56}} \overset{\frown}{\underline{\underline{6765}}} \underline{3} \quad \left| \quad \underline{2^{\#}} \underline{\underline{12}} \underline{35} \quad \underline{\underline{32}} \underline{1^b} \cdot \quad \right\|$$

37.

$$1 = G \quad \frac{4}{4}$$

$$\underline{\underline{5.}} \quad \underline{\underline{3}} \quad \underline{\underline{2}} \quad \underline{\underline{1}} \quad \underline{\underline{5.}} \quad \underline{\underline{67}} \quad \underline{\underline{1}} \quad | \quad \underline{\underline{2}} \quad \underline{\underline{5}} \quad \underline{\underline{31}} \quad \underline{\underline{2^{\#}12.}} \quad |$$

$$\underline{\underline{6.}} \quad \underline{\underline{7}} \quad \underline{\underline{1}} \quad \underline{\underline{6}} \quad \underline{\underline{6542}} \quad \underline{\underline{3}} \quad | \quad \underline{\underline{4}} \quad \underline{\underline{3}} \quad \underline{\underline{2.}} \quad \underline{\underline{7}} \quad \underline{\underline{1}} \quad - \quad ||$$

38.

$$1 = F \quad \frac{4}{4}$$

$$\underline{\underline{3217}} \quad \underline{\underline{6}} \quad \underline{\underline{3}} \quad \underline{\underline{37}} \quad \underline{\underline{1}} \quad \underline{\underline{6}} \quad | \quad \underline{\underline{6}} \quad \underline{\underline{2}} \quad \underline{\underline{4}} \quad \underline{\underline{3}} \quad - \quad |$$

$$\underline{\underline{234}} \quad \underline{\underline{3}} \quad \underline{\underline{6}} \quad \underline{\underline{7.}} \quad \underline{\underline{^{\#}5}} \quad \underline{\underline{3}} \quad | \quad \underline{\underline{2}} \quad \underline{\underline{7}} \quad \underline{\underline{^{\#}5}} \quad \underline{\underline{6}} \quad \underline{\underline{7}} \quad \underline{\underline{6}} \quad - \quad ||$$

39.

$$1 = G \quad \frac{4}{4}$$

$$\underline{\underline{2}} \quad \underline{\underline{56}} \quad \underline{\underline{4}} \quad \underline{\underline{3}} \quad \underline{\underline{5}} \quad \underline{\underline{2}} \quad \underline{\underline{3}} \quad | \quad \underline{\underline{5}} \quad \underline{\underline{65}} \quad \underline{\underline{4}} \quad \underline{\underline{32}} \quad \underline{\underline{5}} \quad \underline{\underline{1}} \quad \underline{\underline{61}} \quad |$$

$$\underline{\underline{2.}} \quad \underline{\underline{^{\#}1}} \quad \underline{\underline{2}} \quad \underline{\underline{56}} \quad \underline{\underline{4435}} \quad \underline{\underline{2}} \quad \underline{\underline{3}} \quad | \quad \underline{\underline{5.}} \quad \underline{\underline{7}} \quad \underline{\underline{0623}} \quad \underline{\underline{5}} \quad - \quad ||$$

40.

$$1 = F \quad \frac{4}{4}$$

$$\underline{\underline{3}} \quad \underline{\underline{6.}} \quad \underline{\underline{^{\#}5}} \quad \underline{\underline{6712}} \quad \underline{\underline{3}} \quad | \quad \underline{\underline{6.}} \quad \underline{\underline{7}} \quad \underline{\underline{6}} \quad \underline{\underline{4}} \quad \underline{\underline{2}} \quad \underline{\underline{3}} \quad - \quad |$$

$$\underline{\underline{3.}} \quad \underline{\underline{3}} \quad \underline{\underline{4}} \quad \underline{\underline{3}} \quad \underline{\underline{31}} \quad \underline{\underline{6}} \quad \underline{\underline{7}} \quad | \quad \underline{\underline{3}} \quad \underline{\underline{2}} \quad \underline{\underline{71}} \quad \underline{\underline{6}} \quad - \quad ||$$

41.

$$1 = G \quad \frac{4}{4}$$

$$\underline{5} \underline{2} \quad \underline{\underline{2165}} \quad \underline{5} \underline{2} \cdot \quad \left| \quad \underline{5} \underline{7} \quad \underline{1} \underline{1} \underline{3} \underline{2} \quad \right|$$

$$6 \cdot \quad \underline{\underline{56}} \underline{4} \overset{3}{\underline{3 \underline{2}}} \underline{3} \quad \left| \quad \underline{7} \cdot \underline{1} \underline{2} \underline{6} \underline{5} \quad - \quad \right\|$$

42.

$$1 = G \quad \frac{4}{4}$$

$$\underline{6} \quad \underline{1} \underline{2} \quad \overset{3}{\underline{3 \underline{4} \underline{3}}} \underline{2} \quad \left| \quad \underline{1} \underline{7} \underline{6} \overset{\#}{\underline{5}} \cdot \underline{6} \underline{7} \quad - \quad \right|$$

$$\underline{0} \underline{17} \underline{6} \underline{3} \quad \underline{\underline{2654}} \underline{4} \underline{2} \quad \left| \quad \underline{3} \underline{3} \quad \overset{\#}{\underline{57}} \underline{6} \quad - \quad \right\|$$

43.

$$1 = D \quad \frac{4}{4}$$

$$\underline{1} \cdot \underline{5} \underline{1} \underline{2} \quad \underline{3} \underline{\underline{23}} \underline{1} \quad \left| \quad \underline{6} \underline{4} \quad \overset{3}{\underline{3 \underline{2} \underline{6}}} \underline{5} \quad - \quad \right|$$

$$\underline{\dot{1}} \underline{5} \quad \underline{6} \quad \underline{\underline{6435}} \underline{2} \quad \left| \quad \underline{5} \underline{4} \quad \underline{3} \cdot \underline{2} \underline{1} \quad - \quad \right\|$$

44.

$$1 = F \quad \frac{4}{4}$$

$$\underline{3} \cdot \underline{6} \underline{7} \underline{1} \quad \underline{\underline{2317}} \underline{6} \quad \left| \quad \underline{2} \underline{4} \quad \underline{6} \overset{\#}{\underline{56}} \underline{3} \cdot \quad \right|$$

$$\underline{4} \cdot \underline{3} \underline{2} \underline{6} \quad \underline{\underline{3432}} \underline{1} \quad \left| \quad \underline{2} \underline{3} \quad \underline{17} \underline{6} \quad - \quad \right\|$$

45.

$$1 = G \quad \frac{4}{4}$$

$$\underline{\dot{6}.} \quad \underline{3} \quad \underline{\underline{1 \underline{\underline{76}} \underline{\underline{3 \underline{\underline{6}}}}}} \quad | \quad \underline{\underline{34}} \quad \underline{\underline{3 \underline{\underline{2 \underline{\underline{4}}}}}} \quad 3 \quad - \quad |$$

$$6. \quad \underline{\underline{\#56}} \quad \underline{\underline{3432}} \quad \underline{1. \underline{2}} \quad | \quad \underline{3 \underline{\underline{3}}} \quad \underline{\underline{\#5. \underline{\underline{7 \underline{\underline{6}}}}}} \quad - \quad ||$$

46.

$$1 = G \quad \frac{4}{4}$$

$$\underline{\underline{\dot{5}. \underline{\underline{\dot{5}}}}} \underline{1 \underline{2}} \quad \underline{\underline{345}} \quad \underline{3} \quad | \quad \underline{6 \underline{\underline{43}}} \underline{2 \underline{1}} \quad \underline{\overset{3}{7 \underline{\underline{1 \underline{\#1}}}}} \quad 2 \quad |$$

$$\underline{3. \underline{\underline{3 \underline{2 \underline{1}}}}} \quad \underline{2 \underline{\dot{6}.}} \quad | \quad \underline{\underline{\underline{5724}}} \quad \underline{\underline{4 \underline{32}}} \quad 1 \quad - \quad ||$$

47.

$$1 = {}^bB \quad \frac{4}{4}$$

$$\underline{\dot{1}. \underline{7 \underline{6 \underline{\dot{2}}}}} \quad \underline{3 \underline{\underline{6 \underline{\dot{1}}}}} \quad 5 \quad | \quad \underline{\dot{2} \underline{\dot{1}}} \quad \underline{76} \quad 5 \quad - \quad |$$

$$\underline{0 \underline{2}} \quad \underline{3 \underline{5}} \quad \underline{\dot{1}. \underline{7 \underline{6}}} \quad | \quad \underline{\underline{2356}} \quad \underline{\underline{63 \underline{2 \underline{1}}}}} \quad - \quad ||$$

48.

$$1 = {}^bE \quad \frac{4}{4}$$

$$6 \quad \underline{3. \underline{6 \underline{121 \underline{7 \underline{\dot{6} \underline{\#5}}}}}} \quad | \quad \underline{\underline{6 \underline{\underline{7 \underline{\dot{1}}}}} \underline{2 \underline{4}}} \quad \underline{\underline{3 \underline{\underline{2 \underline{3.}}}}} \quad |$$

$$\underline{0 \underline{67 \underline{\dot{1} \underline{6}}}} \quad \underline{\overset{3}{4 \underline{3 \underline{1}}}} \quad 2 \quad | \quad \underline{0 \underline{\underline{56}}} \quad \underline{\underline{7 \underline{2}}} \quad \underline{\underline{231 \underline{7 \underline{6}}}} \quad ||$$

49.

$$1 = D \quad \frac{4}{4}$$

$$\underline{2} \quad \underline{\underline{35}} \quad \underline{6} \quad \underline{5} \quad \underline{\underline{321}} \quad \underline{\dot{7}} \quad | \quad \underline{\dot{6}} \quad \underline{6} \quad \underline{5.} \quad \underline{\underline{2}} \quad \underline{\underline{345.}} \quad |$$

$$\underline{\underline{066\dot{1}}} \quad \underline{4} \quad \underline{3} \quad \underline{2} \quad \underline{5} \quad \underline{\dot{7}\dot{1}} \quad | \quad 2 \quad \overset{3}{\underline{\dot{6} \quad \dot{1} \quad \dot{2}}} \quad \underline{\dot{5}} \quad - \quad ||$$

50.

$$1 = D \quad \frac{4}{4}$$

$$\underline{5} \quad \underline{\underline{25}} \quad \underline{1} \quad \underline{\underline{\dot{7}\dot{6}}} \quad \underline{1} \quad \underline{\dot{5}} \quad \underline{\underline{0612}} \quad | \quad \underline{4} \quad \underline{2} \quad \overset{\curvearrowright}{\underline{\dot{2}\dot{1}76}} \quad \underline{\underline{545.}} \quad |$$

$$\underline{\underline{\dot{1}5}} \quad \underline{\dot{1}} \quad \underline{\underline{6\dot{1}65}} \quad \underline{\underline{4356}} \quad \underline{2} \quad | \quad \underline{\underline{567.}} \quad \underline{0} \quad \underline{\underline{\dot{6}5}} \quad \underline{1} \quad - \quad ||$$

51.

$$1 = F \quad \frac{4}{4}$$

$$\underline{2.} \quad \underline{\underline{5}} \quad \underline{3} \quad \underline{1} \quad \underline{\underline{232.}} \quad | \quad \underline{\dot{6.}} \quad \underline{5} \quad \underline{\underline{326}} \quad \underline{2} \quad \underline{1.} \quad |$$

$$\underline{0} \quad \underline{2} \quad \underline{5} \quad \underline{6} \quad \overset{3}{\underline{5 \quad \sharp 4 \quad 5}} \quad \underline{3} \quad | \quad \underline{2} \quad \underline{5} \quad \underline{\underline{26}} \quad \underline{\dot{5}} \quad - \quad ||$$

52.

$$1 = D \quad \frac{4}{4}$$

$$\underline{5} \quad \underline{\dot{1}6} \quad \underline{5} \quad \underline{3} \quad \underline{\underline{0235}} \quad \underline{1.} \quad \underline{\underline{2}} \quad | \quad \underline{3} \quad \underline{\underline{65}} \quad \underline{1} \quad \underline{\dot{6}} \quad \underline{2} \quad - \quad |$$

$$\underline{3} \quad \underline{\dot{2}} \quad \underline{\dot{1}} \quad \underline{\underline{65}} \quad \underline{\underline{06}} \quad \underline{\dot{1}} \quad \underline{3} \quad \overset{\curvearrowright}{|} \quad \underline{3} \quad \underline{\underline{25}} \quad \underline{\underline{12}} \quad \underline{\dot{6}} \quad \underline{\dot{5}} \quad - \quad ||$$

53.

$$1 = C \quad \frac{4}{4}$$

5. 1̇ 6 5 32 1    23 | 6    2̇ 1̇ 6 5    -    |

1̇1̇ 3̇ 2̇ 1̇    31̇ 6    53 | 2. 6 5<sup>#</sup>452 1    -    ||

54.

$$1 = D \quad \frac{4}{4}$$

5 1̇2̇ 1̇ 6    1̇5 6 5 3 | 2. 5 5 61̇ 2<sup>#</sup>12.    |

51̇ 2̇ 2̇1̇6    563.    | 2. 5 4612 5    -    ||

55.

$$1 = C \quad \frac{4}{4}$$

5. 6 3 2    1 1̇    2̇ | 3̇ 3̇    2̇ 61̇ 5    -    |

62̇1̇    6    5. 6 3 | 0 2    2532 1    -    ||

56.

$$1 = D \quad \frac{4}{4}$$

6 3    6 1̇7 6. 5 3 | 4 6    4 7̇ 1̇ 2 3 |

6 43 2    32̇ 1̇ 7 | 5 67 7̇ 2̇    1̇ 1̇7 6 ||

57.

$$1 = {}^bE \quad \frac{4}{4}$$

6. 5 6 7 6. 5<sup>#</sup>4 | 3 6 612<sup>#</sup>4 3 - |

0 23 5 6 3431 2 | 3 7 17 6 - ||

58.

$$1 = {}^bE \quad \frac{4}{4}$$

3. 4 5 6 5 3 2 1 | 6 3 3126 5 - |

6. 7 1 2 316 5 | 6 4 3526 1 - ||

59.

$$1 = D \quad \frac{4}{4}$$

3. 2 3 4 5. 1 6 5 | 3 5 3 26 1. 2 |

3 1 65 4 35 2 | 5 6 6212 5 - ||

60.

$$1 = G \quad \frac{4}{4}$$

1. 2 161 56 3 2 | 6 3 1 2 - |

3 2 5 3 2 3 1 | 6 2 2316 5 - ||

61.

$$1 = D \quad \frac{4}{4}$$

1. 2 3 5 62i    7 | 6 4 435 2 - |

3 6 5 6 i4 3 2 | 2356 3526 1 - ||

62.

$$1 = A \quad \frac{4}{4}$$

2. 6 2 3 i 76 5 | 6 i 32 i 2 - |

3 i    7 6265 4 | 3 6 1 2 3 2 - ||

63.

$$1 = A \quad \frac{4}{4}$$

3.    6 i 3    2 | 7 i2 i. 7 6.    76 |

#5. 6 7 2 i 6 4 2 | 3    2 i7 6 - ||

64.

$$1 = G \quad \frac{4}{4}$$

0 2 1 6 56 7 5 | 6 1    2 35 2. |

3 5    6 2#1 2 3 | 5 7 7623 1 - ||



65.

$$1 = F \quad \frac{4}{4}$$

2 32 1762 5.      6 | 5 2 3235 2 - |

32 3 5      6 3 2 1 | 2 2516 5 - ||

66.

$$1 = D \quad \frac{4}{4}$$

3 6      56 i 7i 6 | 5. 6 7 65 6 3. |

0 6 3 2 3 6 3 5 | 3 i i765 6 - ||

67.

$$1 = C \quad \frac{4}{4}$$

5.      67 i 3 2 i | 6. 2 i 76 5 - |

i      2 i 6i56 6 53 | 2 5 32 6 1 - ||

68.

$$1 = C \quad \frac{4}{4}$$

6. 5 6 2 i 7 6 5 | 6 1 25 3#2 3. |

0 2 i 6 5643 2 | 2 61 2532 1 - ||

69.

$$1 = \text{D} \quad \frac{4}{4}$$

5. 3 2 5   3 23 1. 2 | 3 2̇   1̇ 76 5   -   |

6 1̇   12 3565 3   | 2 5̇   6. 2 1   -   ||

70.

$$1 = \text{D} \quad \frac{4}{4}$$

5. 3 6 5   3432 1   | 0 6̇   1236 535.   |

6. 1̇ 4 3   2 5   71 | 2   1 2 6̇ 5̇   -   ||

71.

$$1 = {}^b\text{E} \quad \frac{4}{4}$$

2 5   3532 1 23 5̇   | 2 5̇   6513 2<sup>#</sup>12.   |

2 56 5 43 356̇   1   | 2. 1 6̇ 16̇ 5̇   -   ||

72.

$$1 = {}^b\text{B} \quad \frac{4}{4}$$

5. 2 3 5   6532 1   | 1̇ 2̇   76 3 5   -   |

6. 1̇ 6 5   5 71 2 3   | 5 6   3526̇ 1   -   ||

73.

$$1 = {}^bE \quad \frac{4}{4}$$

$$\underline{2} \quad \underline{\underline{21}} \quad \underline{2} \quad \underline{\underline{35}} \quad 6. \quad \underline{\dot{1}} \quad | \quad \underline{5} \quad \underline{\underline{6\dot{1}}} \quad \underline{6} \quad \underline{2} \quad \underline{\underline{563}}. \quad |$$

$$\underline{3.} \quad \underline{5} \quad \underline{6} \quad \underline{\dot{1}} \quad \underline{\underline{64}} \quad \underline{3} \quad 2 \quad | \quad \underline{5} \quad \underline{\dot{5}} \quad 0 \quad \underline{\underline{62}} \quad 1 \quad - \quad ||$$

74.

$$1 = A \quad \frac{4}{4}$$

$$\underline{\dot{2}} \quad \underline{6} \quad \underline{\dot{2}.} \quad \underline{\dot{3}} \quad \underline{\dot{1}} \quad \underline{\underline{76}} \quad 5 \quad | \quad \underline{6} \quad \underline{3} \quad \underline{\underline{567\dot{2}}} \quad 6 \quad - \quad |$$

$$\underline{\dot{1}} \quad \underline{\underline{65}} \quad \underline{6} \quad \underline{\dot{1}} \quad 0 \quad \underline{\underline{56}} \quad \underline{4} \quad \underline{3} \quad | \quad \overset{3}{\underline{2^{\#1}2}} \quad \underline{3} \quad \underline{5} \quad 2 \quad - \quad ||$$

75.

$$1 = {}^bE \quad \frac{4}{4}$$

$$\underline{2} \quad \underline{\underline{21}} \quad \underline{\underline{235}} \quad \underline{\underline{6\dot{1}6}} \quad \underline{5} \quad | \quad \underline{6} \quad \underline{\dot{1}} \quad \underline{\underline{12}} \quad \underline{\underline{353}}. \quad |$$

$$\underline{3.} \quad \underline{5} \quad \underline{6} \quad \underline{\dot{1}} \quad \underline{\underline{65}} \quad \underline{3} \quad 2 \quad | \quad 3 \quad \underline{2} \quad \underline{\dot{5}} \quad \underline{\dot{6}} \quad - \quad ||$$

76.

$$1 = F \quad \frac{4}{4}$$

$$\underline{5.} \quad \underline{6} \quad \underline{5} \quad \underline{4} \quad \underline{\underline{3523}} \quad 1 \quad | \quad \underline{2} \quad \underline{\dot{5}} \quad \underline{\dot{6}} \quad \underline{\underline{13}} \quad \underline{\underline{2^{\#1}2}}. \quad |$$

$$3 \quad \underline{6} \quad \underline{\underline{56}} \quad 0 \quad \underline{\underline{75}} \quad 3 \quad | \quad \underline{2} \quad \underline{5} \quad \overset{3}{\underline{3 \quad 2 \quad \dot{5}}} \quad \underline{\dot{6}} \quad - \quad ||$$

77.

$$1 = {}^b\text{E} \quad \frac{4}{4}$$

$$\underline{\underline{5}} \quad \underline{\underline{6\dot{1}}} \quad \underline{\underline{6}} \quad \underline{\underline{5}} \quad \underline{\underline{63}} \quad \underline{\underline{2}} \quad \underline{\underline{1}} \quad | \quad \underline{\underline{2}} \quad \underline{\underline{35}} \quad \underline{\underline{2761}} \quad \underline{\underline{5}} \quad - \quad |$$

$$\underline{\underline{6.}} \quad \underline{\underline{1}} \quad \underline{\underline{2}} \quad \underline{\underline{3}} \quad \underline{\underline{53}} \quad \underline{\underline{\dot{1}}} \quad \underline{\underline{6}} \quad | \quad \underline{\underline{5}} \quad \underline{\underline{6}} \quad \overset{3}{\underline{\underline{3}}} \quad \overset{3}{\underline{\underline{5}}} \quad \underline{\underline{2}} \quad \underline{\underline{1}} \quad - \quad ||$$

78.

$$1 = \text{C} \quad \frac{4}{4}$$

$$\underline{\underline{5.}} \quad \underline{\underline{3}} \quad \underline{\underline{5}} \quad \underline{\underline{6}} \quad \underline{\underline{\dot{2}}} \quad \underline{\underline{\dot{1}6}} \quad \underline{\underline{5}} \quad | \quad \underline{\underline{\dot{1}}} \quad \underline{\underline{4}} \quad \underline{\underline{3}} \quad \underline{\underline{23}} \quad \underline{\underline{5}} \quad - \quad |$$

$$\underline{\underline{66}} \quad \underline{\underline{\dot{1}}} \quad \underline{\underline{4}} \quad \underline{\underline{3}} \quad \overset{\curvearrowright}{\underline{\underline{3235}}} \quad \underline{\underline{2}} \quad | \quad \underline{\underline{5}} \quad \underline{\underline{7}} \quad \underline{\underline{24}} \quad \underline{\underline{321.}} \quad ||$$

79.

$$1 = {}^b\text{E} \quad \frac{4}{4}$$

$$\underline{\underline{5}} \quad \underline{\underline{5}} \quad \underline{\underline{6\dot{1}}} \quad \underline{\underline{6}} \quad \underline{\underline{56}} \quad \underline{\underline{4.}} \quad \underline{\underline{3}} \quad | \quad \underline{\underline{2}} \quad \underline{\underline{4}} \quad \underline{\underline{6\dot{1}76}} \quad \underline{\underline{5}} \quad - \quad |$$

$$\underline{\underline{\dot{1}}} \quad \underline{\underline{5\dot{1}}} \quad \overset{\curvearrowright}{\underline{\underline{\dot{1}}}} \quad \underline{\underline{65}} \quad \underline{\underline{43}} \quad \underline{\underline{5}} \quad \underline{\underline{2}} \quad \underline{\underline{3}} \quad | \quad \overset{3}{\underline{\underline{0}}} \quad \overset{3}{\underline{\underline{2}}} \quad \underline{\underline{6}} \quad \overset{3}{\underline{\underline{1}}} \quad \overset{3}{\underline{\underline{7}}} \quad \underline{\underline{2}} \quad \underline{\underline{5}} \quad - \quad ||$$

80.

$$1 = \text{A} \quad \frac{4}{4}$$

$$\underline{\underline{\dot{2}.}} \quad \underline{\underline{\dot{5}}} \quad \underline{\underline{\dot{2}.}} \quad \underline{\underline{\dot{1}6}} \quad | \quad \underline{\underline{5}} \quad \underline{\underline{6}} \quad \underline{\underline{\dot{2}}} \quad \underline{\underline{\dot{1}\dot{2}}} \quad \underline{\underline{\dot{3}\dot{1}}} \quad \underline{\underline{6.}} \quad |$$

$$\underline{\underline{2}} \quad \underline{\underline{\dot{1}6}} \quad \underline{\underline{5^\#4}} \quad \underline{\underline{5.}} \quad | \quad \underline{\underline{0}} \quad \underline{\underline{\dot{1}}} \quad \underline{\underline{5}} \quad \underline{\underline{35}} \quad \underline{\underline{2}} \quad - \quad ||$$

81.

$$1 = D \quad \frac{4}{4}$$

3.        5   i 76 5     |   6 4   0352 1.        7     |

6 6   5. 6 43 5 2     |   2 7   5 32 1        -     ||

82.

$$1 = {}^b E \quad \frac{4}{4}$$

2 16 2 35 6.        i     |   6 2   3 5   65 3.        |

5. 6 1 3   2<sup>#</sup> 1 2     3     |   3 5 6   2 1   6        -     ||

83.

$$1 = F \quad \frac{4}{4}$$

6 1   2. 4 3.        3     |   6 5        12 3        -     |

2. 3 3   46<sup>#</sup> 56 7        3     |   6 3   23.   6        -     ||

84.

$$1 = {}^b B \quad \frac{4}{4}$$

6.        7   i 76<sup>#</sup> 5     |   6 4   3 2   3        -     |

2 4        3   2<sup>#</sup> 12.        |   3 2   i76<sup>#</sup> 5 6        -     ||

85.

$$1 = G \quad \frac{4}{4}$$

2 2 3516 2<sup>#</sup>1 2     3 | 6 3 21 6 53 5. |

6.1 56 1. 2 5 32 3 | 2 5 3235 2 - ||

86.

$$1 = D \quad \frac{4}{4}$$

3 6 <sup>#</sup>56 1 71 6 | 5. 6 7 65 6 3. |

6 3 5 43 2 1 | 7 7 3<sup>#</sup>5 6 - ||

87.

$$1 = {}^bE \quad \frac{4}{4}$$

5 5 1 3 2.     3 | 5<sup>#</sup>45 6 1 565. |

6 1     2 3 56 5 3 | 5 6 35 2 1 - ||

88.

$$1 = D \quad \frac{4}{4}$$

6. 3 5 6 i.     7 | 6 3 5 6 7 6 - |

66 i 4 3 2 6     71 | 234 43<sup>#</sup>23 1 - ||

89.

$$1 = G \quad \frac{4}{4}$$

$$\underline{2.} \quad \underline{\underline{3}} \quad \underline{2} \quad \underline{\underline{61}} \quad \underline{\underline{5}} \quad \underline{\underline{63}} \quad \underline{2} \quad \left| \quad \underline{2} \quad 5 \quad \underline{\underline{12}} \quad 3 \quad - \quad \right|$$

$$\underline{2.} \quad \underline{\underline{5}} \quad \overset{3}{\underline{3 \quad 2 \quad 3}} \quad \underline{\underline{5^\#45}} \quad \underline{6} \quad \left| \quad 3 \quad \underline{\underline{5.635}} \quad 2 \quad - \quad \right\|$$

90.

$$1 = {}^bE \quad \frac{4}{4}$$

$$\underline{5.} \quad \underline{\underline{6}} \quad \underline{\underline{5323}} \quad 1. \quad \underline{7} \quad \left| \quad \underline{\underline{6}} \quad \underline{\underline{6}} \quad \underline{\underline{6435}} \quad 2. \quad \underline{\underline{12}} \quad \right|$$

$$\underline{3} \quad \underline{5} \quad \underline{\underline{1.}} \quad \underline{\underline{7}} \quad \underline{\underline{6432}} \quad 1 \quad \left| \quad \underline{\underline{65}} \quad \underline{\underline{6}} \quad \underline{5} \quad \underline{\underline{32}} \quad 1 \quad - \quad \right\|$$

91.

$$1 = C \quad \frac{4}{4}$$

$$\underline{5.} \quad \underline{\underline{6}} \quad \underline{\underline{1}} \quad \underline{7} \quad \underline{6} \quad \underline{\underline{56}} \quad 3 \quad \left| \quad \underline{2} \quad \underline{5} \quad \underline{\underline{321}} \quad 2. \quad \underline{3} \quad \right|$$

$$\underline{5} \quad \underline{\underline{56}} \quad \underline{\underline{1}} \quad \underline{7} \quad \underline{\underline{6165}} \quad \underline{4} \quad \underline{3} \quad \left| \quad \underline{2} \quad \underline{5} \quad \overset{3}{\underline{\underline{5326}}} \quad 1 \quad - \quad \right\|$$

92.

$$1 = D \quad \frac{4}{4}$$

$$6 \quad \underline{\underline{1}} \quad \underline{7} \quad \underline{6} \quad 3 \quad \underline{4} \quad \left| \quad \underline{\underline{2}} \quad \underline{\underline{1}} \quad \underline{\underline{76^\#56}} \quad 7. \quad \underline{3} \quad \right|$$

$$\underline{\underline{1.}} \quad \underline{\underline{64}} \quad \underline{3} \quad \underline{\underline{24}} \quad \underline{\underline{63}} \quad \left| \quad \underline{7} \quad \underline{3} \quad \overset{3}{\underline{\underline{567}}} \quad 6 \quad - \quad \right\|$$

93.

$$1 = {}^b\text{E} \quad \frac{4}{4}$$

$$\underline{\underline{\dot{6}} \underline{\underline{12}} \underline{\underline{3}} \underline{\underline{6}} \overset{\#}{5} \underline{\underline{7}} \underline{\underline{3}} \quad \Big| \quad \underline{\underline{\dot{2}}} \underline{\underline{\dot{7}}} \overset{\frown}{\underline{\underline{\dot{7}12}} \overset{\#}{2}} \underline{\underline{3}} \quad - \quad \Big|$$

$$\underline{\underline{4}} \underline{\underline{2}} \underline{\underline{\dot{6}}} \overset{\#}{5} \overset{\frown}{\underline{\underline{\dot{6}32}}} \underline{\underline{1}} \quad \Big| \quad \underline{\underline{\dot{7}}} \underline{\underline{3}} \underline{\underline{21}} \underline{\underline{\dot{7}}} \underline{\underline{\dot{6}}} \quad - \quad \Big\|$$

94.

$$1 = {}^b\text{E} \quad \frac{4}{4}$$

$$\underline{\underline{3}} \underline{\underline{5}} \underline{\underline{2}} \underline{\underline{32}} \underline{\underline{1}} \underline{\underline{\dot{5}}} \quad \underline{\underline{\dot{6}}} \quad \Big| \quad \underline{\underline{1}} \underline{\underline{2}} \underline{\underline{\dot{3}}} \underline{\underline{\dot{6}}} \underline{\underline{5}} \quad - \quad \Big|$$

$$\underline{\underline{0}} \overset{\frown}{\underline{\underline{\dot{1}}}} \underline{\underline{\dot{1}}} \underline{\underline{3}} \underline{\underline{\dot{5}}} \underline{\underline{\dot{7}}} \underline{\underline{6}} \quad \Big| \quad \underline{\underline{2}} \underline{\underline{5}} \quad \underline{\underline{\dot{7}2}} \underline{\underline{1}} \quad - \quad \Big\|$$

95.

$$1 = \text{F} \quad \frac{4}{4}$$

$$\underline{\underline{\dot{6}}} \underline{\underline{\dot{7}}} \underline{\underline{1}} \overset{\frown}{\underline{\underline{3}}} \underline{\underline{32}} \underline{\underline{4}} \underline{\underline{3}} \quad \Big| \quad \underline{\underline{6}} \underline{\underline{6}} \overset{\#}{5} \underline{\underline{64}} \underline{\underline{3}} \quad - \quad \Big|$$

$$\underline{\underline{23}} \underline{\underline{4}} \quad \underline{\underline{2}} \underline{\underline{\dot{3}}} \overset{\#}{5} \underline{\underline{7}} \quad \Big| \quad \underline{\underline{6}} \underline{\underline{2}} \overset{\frown}{\underline{\underline{317}}} \underline{\underline{\dot{6}}} \quad - \quad \Big\|$$

96.

$$1 = \text{G} \quad \frac{4}{4}$$

$$\underline{\underline{5}} \underline{\underline{12}} \underline{\underline{3}} \underline{\underline{4}} \underline{\underline{5}} \cdot \quad \underline{\underline{3}} \quad \Big| \quad \underline{\underline{0}} \underline{\underline{2}} \underline{\underline{\dot{3}}} \underline{\underline{1}} \underline{\underline{2}} \underline{\underline{\dot{5}}} \cdot \quad \Big|$$

$$\underline{\underline{\dot{6}}} \underline{\underline{6}} \underline{\underline{5}} \underline{\underline{43}} \underline{\underline{2}} \quad \overset{\frown}{\underline{\underline{2}}} \overset{\frown}{\underline{\underline{3}}} \overset{\frown}{\underline{\underline{4}}} \quad \Big| \quad \underline{\underline{5}} \underline{\underline{\dot{7}}} \quad \underline{\underline{4}} \underline{\underline{321}} \cdot \quad \Big\|$$



97.

$$1 = F \quad \frac{4}{4}$$

$$\underline{1.} \quad \underline{\underline{7}} \quad \underline{\underline{6}} \quad \underline{\underline{5}} \quad \underline{\underline{12}} \quad 3. \quad \left| \quad \underline{2} \quad \underline{5} \quad \underline{\underline{7}} \quad \underline{3} \quad 2 \quad - \quad \right|$$

$$\underline{3} \quad 6 \quad \underline{\underline{31}} \quad \underline{2} \quad \underline{\underline{37}} \quad \underline{\underline{7}} \quad \underline{\underline{6}} \quad \left| \quad \underline{5} \quad \underline{\underline{45}} \quad \underline{3} \quad \underline{2} \quad 1 \quad - \quad \right\|$$

98.

$$1 = F \quad \frac{4}{4}$$

$$\underline{\underline{6}} \quad \underline{1} \quad \underline{2} \quad \underline{\underline{35}} \quad 3. \quad \underline{2} \quad \left| \quad \underline{1.} \quad \underline{3} \quad \underline{\underline{217}} \quad \underline{6} \quad - \quad \right|$$

$$\underline{\underline{32}} \quad \underline{\underline{3}} \quad \underline{\underline{6}} \quad \underline{5} \quad \underline{\underline{4}} \quad \underline{3} \quad 2 \quad \left| \quad 3 \quad \underline{5} \quad \underline{\underline{35}} \quad 6 \quad - \quad \right\|$$

99.

$$1 = C \quad \frac{4}{4}$$

$$\underline{3.} \quad \underline{\underline{5}} \quad \underline{6} \quad \underline{\dot{3}} \quad \underline{\underline{\dot{2}376}} \quad 5 \quad \left| \quad \underline{\underline{6\dot{1}}} \quad \underline{\underline{23}} \quad \underline{\underline{5^{\#}45}} \quad \right|$$

$$\underline{6.} \quad \underline{\dot{1}} \quad \underline{4} \quad \underline{6} \quad \underline{\underline{5^{\#}4}} \quad \underline{5} \quad 3 \quad \left| \quad \underline{2} \quad \underline{4} \quad \underline{\underline{4765}} \quad \dot{1} \quad - \quad \right\|$$

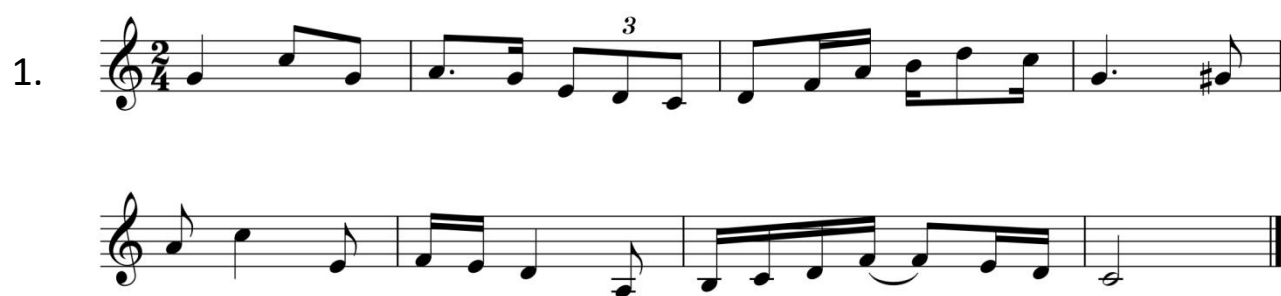
100.

$$1 = G \quad \frac{4}{4}$$

$$\underline{2} \quad \underline{5} \quad \underline{1.} \quad \underline{\underline{2}} \quad \underline{\underline{5^{\#}45}} \quad \underline{\underline{43}} \quad \left| \quad \underline{2} \quad \underline{56} \quad \underline{\underline{1261}} \quad 2. \quad \underline{3} \quad \right|$$

$$\underline{0} \quad 2 \quad \underline{5} \quad \underline{\overset{3}{1} \quad \underline{2} \quad \underline{7}} \quad \underline{6} \quad \left| \quad \underline{\underline{3}} \quad \underline{\underline{27}} \quad \underline{\underline{7}} \quad \underline{\underline{61}} \quad \underline{5} \quad - \quad \right\|$$

(五线谱 100 条)



5.

Exercise 5 consists of two staves in 2/4 time. The first staff begins with a quarter note G4, followed by an eighth note A4, a beamed eighth-note pair (B4, A4), a quarter note G4, an eighth note F#4, a beamed eighth-note pair (E4, D4), and a quarter note C4. The second staff begins with a quarter note D4, followed by an eighth note E4, a beamed eighth-note pair (F#4, E4), a quarter note D4, an eighth note C#4, a beamed eighth-note pair (B4, A4), and a quarter note G4. A triplet of eighth notes (F#4, E4, D4) is marked with a '3' above it in the first staff. The exercise concludes with a double bar line.

6.

Exercise 6 consists of two staves in 2/4 time. The first staff begins with a quarter rest, followed by a quarter note G4, an eighth note A4, a beamed eighth-note pair (B4, A4), a quarter note G4, an eighth note F#4, a beamed eighth-note pair (E4, D4), and a quarter note C4. The second staff begins with a quarter note D4, followed by an eighth note E4, a beamed eighth-note pair (F#4, E4), a quarter note D4, an eighth note C#4, a beamed eighth-note pair (B4, A4), and a quarter note G4. A triplet of eighth notes (F#4, E4, D4) is marked with a '3' above it in the first staff. The exercise concludes with a double bar line.

7.

Exercise 7 consists of two staves in 2/4 time. The first staff begins with a quarter note G4, followed by an eighth note A4, a beamed eighth-note pair (B4, A4), a quarter note G4, an eighth note F#4, a beamed eighth-note pair (E4, D4), and a quarter note C4. The second staff begins with a quarter note D4, followed by an eighth note E4, a beamed eighth-note pair (F#4, E4), a quarter note D4, an eighth note C#4, a beamed eighth-note pair (B4, A4), and a quarter note G4. A triplet of eighth notes (F#4, E4, D4) is marked with a '3' above it in the first staff. The exercise concludes with a double bar line.

8.

Exercise 8 consists of two staves in 2/4 time. The first staff begins with a quarter note G4, followed by an eighth note A4, a beamed eighth-note pair (B4, A4), a quarter note G4, an eighth note F#4, a beamed eighth-note pair (E4, D4), and a quarter note C4. The second staff begins with a quarter note D4, followed by an eighth note E4, a beamed eighth-note pair (F#4, E4), a quarter note D4, an eighth note C#4, a beamed eighth-note pair (B4, A4), and a quarter note G4. A triplet of eighth notes (F#4, E4, D4) is marked with a '3' above it in the first staff. The exercise concludes with a double bar line.

9.

Exercise 9 consists of two staves in 2/4 time. The first staff begins with a dotted quarter note on G4, followed by an eighth rest and an eighth note on Bb4. The second staff continues with eighth notes on A4, G4, and F4, followed by a quarter rest. The third staff starts with an eighth rest and eighth notes on E4, D4, and C4, followed by a dotted quarter note on B4. The fourth staff concludes with a dotted quarter note on A4 and an eighth note on G4 with a sharp sign, followed by a double bar line.

10.

Exercise 10 consists of two staves in 2/4 time. The first staff begins with a quarter note on G4, followed by eighth notes on A4 and B4, and a quarter rest. The second staff continues with eighth notes on C4 and D4, followed by a quarter note on E4 and a quarter rest. The third staff starts with eighth notes on F4 and G4, followed by a dotted quarter note on A4 with a sharp sign. The fourth staff concludes with eighth notes on B4 and A4, followed by a half note on G4 and a double bar line.

11.

Exercise 11 consists of two staves in 2/4 time. The first staff begins with a quarter note on G4, followed by eighth notes on A4 and B4, and a quarter rest. The second staff continues with eighth notes on C4 and D4, followed by a dotted quarter note on E4 with a sharp sign. The third staff starts with a half note on F4. The fourth staff concludes with a half note on G4 and a double bar line.

12.

Exercise 12 consists of two staves in 2/4 time. The first staff begins with a quarter note on G4, followed by eighth notes on A4 and B4, and a quarter rest. The second staff continues with eighth notes on C4 and D4, followed by a dotted quarter note on E4 with a sharp sign. The third staff starts with a half note on F4. The fourth staff concludes with a half note on G4 and a double bar line.

13.

Exercise 13 consists of two staves in 2/4 time. The first staff contains four measures: a quarter note C4, an eighth note D4, a quarter note E4, a quarter note F4, a quarter note G4, a quarter note A4, a quarter note B4, and a quarter note C5. The second staff contains four measures: a quarter note C4, a quarter note D4, a quarter note E4, a quarter note F4, a quarter note G4, a quarter note A4, a quarter note B4, and a quarter note C5. The piece ends with a double bar line.

14.

Exercise 14 consists of two staves in 2/4 time. The first staff contains four measures: a quarter note C4, an eighth note D4, a quarter note E4, a quarter note F4, a quarter note G4, a quarter note A4, a quarter note B4, and a quarter note C5. The second staff contains four measures: a quarter note C4, a quarter note D4, a quarter note E4, a quarter note F4, a quarter note G4, a quarter note A4, a quarter note B4, and a quarter note C5. The piece ends with a double bar line.

15.

Exercise 15 consists of two staves in 2/4 time. The first staff contains four measures: a quarter note C4, an eighth note D4, a quarter note E4, a quarter note F4, a quarter note G4, a quarter note A4, a quarter note B4, and a quarter note C5. The second staff contains four measures: a quarter note C4, a quarter note D4, a quarter note E4, a quarter note F4, a quarter note G4, a quarter note A4, a quarter note B4, and a quarter note C5. The piece ends with a double bar line.

16.

Exercise 16 consists of two staves in 2/4 time. The first staff contains four measures: a quarter note C4, an eighth note D4, a quarter note E4, a quarter note F4, a quarter note G4, a quarter note A4, a quarter note B4, and a quarter note C5. The second staff contains four measures: a quarter note C4, a quarter note D4, a quarter note E4, a quarter note F4, a quarter note G4, a quarter note A4, a quarter note B4, and a quarter note C5. The piece ends with a double bar line.

17.  



Exercise 17 is in 3/4 time. The first staff contains measures 1-4, and the second staff contains measures 5-8. The melody features eighth and sixteenth notes, with a triplet of eighth notes in measure 7.

18.  

Exercise 18 is in 2/4 time. The first staff contains measures 1-4, and the second staff contains measures 5-8. The melody consists of eighth and sixteenth notes, ending with a half note in measure 8.

19.  

Exercise 19 is in 2/4 time. The first staff contains measures 1-4, and the second staff contains measures 5-8. The melody includes eighth and sixteenth notes, with a half note in measure 8.

20.  

Exercise 20 is in 2/4 time. The first staff contains measures 1-4, and the second staff contains measures 5-8. The melody features eighth and sixteenth notes, with a triplet of eighth notes in measure 7.

21.

Exercise 21 consists of two staves in 2/4 time. The first staff contains four measures: a quarter note C4, an eighth note D4, a quarter note E4, a quarter note F4, a quarter note G4, a half note A4, a quarter note B4, and a quarter note C5. The second staff contains four measures: a quarter note C5, an eighth note B4, a quarter note A4, a quarter note G4, a quarter note F4, a quarter note E4, a quarter note D4, and a quarter note C4. The second staff ends with a double bar line.

22.

Exercise 22 consists of two staves in 2/4 time. The first staff contains four measures: a quarter note C4, an eighth note D4, a quarter note E4, a quarter note F4, a quarter note G4, a half note A4, a quarter note B4, and a quarter note C5. The second staff contains four measures: a quarter note C5, an eighth note B4, a quarter note A4, a quarter note G4, a quarter note F4, a quarter note E4, a quarter note D4, and a quarter note C4. The second staff ends with a double bar line.

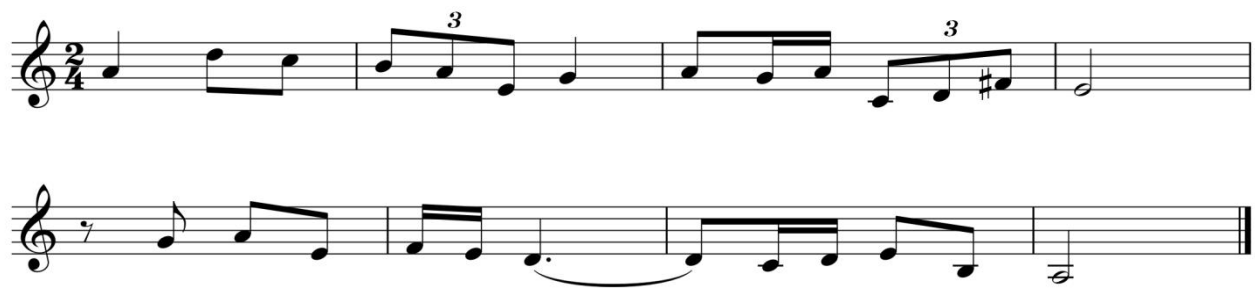
23.

Exercise 23 consists of two staves in 2/4 time. The first staff contains four measures: a quarter note C4, an eighth note D4, a quarter note E4, a quarter note F4, a quarter note G4, a half note A4, a quarter note B4, and a quarter note C5. The second staff contains four measures: a quarter note C5, an eighth note B4, a quarter note A4, a quarter note G4, a quarter note F4, a quarter note E4, a quarter note D4, and a quarter note C4. The second staff ends with a double bar line.

24.

Exercise 24 consists of two staves in 2/4 time. The first staff contains four measures: a quarter note C4, an eighth note D4, a quarter note E4, a quarter note F4, a quarter note G4, a half note A4, a quarter note B4, and a quarter note C5. The second staff contains four measures: a quarter note C5, an eighth note B4, a quarter note A4, a quarter note G4, a quarter note F4, a quarter note E4, a quarter note D4, and a quarter note C4. The second staff ends with a double bar line.

25.  Musical notation for exercise 25, measures 1-2. The first staff is in 2/4 time and contains measures 1 and 2. Measure 1 has a quarter note G4, an eighth note A4, and a quarter note B4. Measure 2 has a quarter note C5, an eighth note B4, and a quarter note A4. The second staff contains measures 3 and 4. Measure 3 has a quarter note G4, an eighth note A4, and a quarter note B4. Measure 4 has a quarter note C5, an eighth note B4, and a quarter note A4. The exercise ends with a double bar line.

26.  Musical notation for exercise 26, measures 1-2. The first staff is in 2/4 time and contains measures 1 and 2. Measure 1 has a quarter note G4, an eighth note A4, and a quarter note B4. Measure 2 has a quarter note C5, an eighth note B4, and a quarter note A4. The second staff contains measures 3 and 4. Measure 3 has a quarter note G4, an eighth note A4, and a quarter note B4. Measure 4 has a quarter note C5, an eighth note B4, and a quarter note A4. The exercise ends with a double bar line.

27.  Musical notation for exercise 27, measures 1-2. The first staff is in 2/4 time and contains measures 1 and 2. Measure 1 has a quarter note G4, an eighth note A4, and a quarter note B4. Measure 2 has a quarter note C5, an eighth note B4, and a quarter note A4. The second staff contains measures 3 and 4. Measure 3 has a quarter note G4, an eighth note A4, and a quarter note B4. Measure 4 has a quarter note C5, an eighth note B4, and a quarter note A4. The exercise ends with a double bar line.

28.  Musical notation for exercise 28, measures 1-2. The first staff is in 3/4 time and contains measures 1 and 2. Measure 1 has a quarter note G4, an eighth note A4, and a quarter note B4. Measure 2 has a quarter note C5, an eighth note B4, and a quarter note A4. The second staff contains measures 3 and 4. Measure 3 has a quarter note G4, an eighth note A4, and a quarter note B4. Measure 4 has a quarter note C5, an eighth note B4, and a quarter note A4. The exercise ends with a double bar line.



29.

Exercise 29 consists of two staves in 2/4 time. The first staff contains measures 1 through 4. Measure 1 has a quarter note G4, an eighth note A4, and a quarter note B4. Measure 2 has a dotted quarter note A4, an eighth note G4, and a quarter note F4. Measure 3 has an eighth note G4, a sixteenth note A4, an eighth note B4, a quarter note A4, and a quarter note G4. Measure 4 has a quarter note F4, a triplet of eighth notes E4, D4, and C4, and a half note B3. The second staff contains measures 5 through 8. Measure 5 has a quarter note B3, an eighth note A3, and a quarter note G3. Measure 6 has a quarter note F3, an eighth note E3, and a quarter note D3. Measure 7 has an eighth note C3, a sixteenth note B2, an eighth note A2, a quarter note G2, and a quarter note F2. Measure 8 has a half note E2 and a whole note D2.

30.

Exercise 30 consists of two staves in 2/4 time. The first staff contains measures 1 through 4. Measure 1 has a quarter note G4, an eighth note A4, and a quarter note B4. Measure 2 has a quarter note A4, an eighth note G4, and a quarter note F4. Measure 3 has a quarter note E4, an eighth note D4, and a quarter note C4. Measure 4 has a quarter note B3, an eighth note A3, and a quarter note G3 with a sharp sign. The second staff contains measures 5 through 8. Measure 5 has a quarter note F3, an eighth note E3, and a quarter note D3. Measure 6 has an eighth note C3, a sixteenth note B2, an eighth note A2, a quarter note G2, and a quarter note F2. Measure 7 has a quarter note E2, an eighth note D2, and a quarter note C2 with a triplet of eighth notes B1, A1, and G1. Measure 8 has a half note F1 and a whole note E1.

31.

Exercise 31 consists of two staves in 2/4 time. The first staff contains measures 1 through 4. Measure 1 has a quarter note G4, an eighth note A4, and a quarter note B4. Measure 2 has a quarter note A4, an eighth note G4, and a quarter note F4. Measure 3 has an eighth note E4, a sixteenth note D4, an eighth note C4, a quarter note B3, and a quarter note A3. Measure 4 has a quarter note G3, an eighth note F3, and a quarter note E3. The second staff contains measures 5 through 8. Measure 5 has a quarter note D3, an eighth note C3, and a quarter note B2. Measure 6 has a quarter note A2, an eighth note G2, and a quarter note F2. Measure 7 has an eighth note E2, a sixteenth note D2, an eighth note C2, a quarter note B1, and a quarter note A1 with a triplet of eighth notes G1, F1, and E1. Measure 8 has a half note D1 and a whole note C1.

32.

Exercise 32 consists of two staves in 2/4 time. The first staff contains measures 1 through 4. Measure 1 has a quarter note G4, an eighth note A4, and a quarter note B4. Measure 2 has a quarter note A4, an eighth note G4, and a quarter note F4. Measure 3 has a quarter note E4, an eighth note D4, and a quarter note C4. Measure 4 has a quarter note B3, an eighth note A3, and a quarter note G3. The second staff contains measures 5 through 8. Measure 5 has a quarter note F3, an eighth note E3, and a quarter note D3. Measure 6 has a quarter note C3, an eighth note B2, and a quarter note A2. Measure 7 has an eighth note G2, a sixteenth note F2, an eighth note E2, a quarter note D2, and a quarter note C2 with a triplet of eighth notes B1, A1, and G1. Measure 8 has a half note F1 and a whole note E1.

33.

Exercise 33 is written in 3/4 time. The first staff contains four measures: a half note G4, a quarter note A4, a quarter note B4, a quarter note C5, a quarter note B4, a quarter note A4, a quarter note G4, and a quarter note F#4. The second staff contains four measures: a quarter note G#4, a quarter note A4, a quarter note B4, a quarter note C5, a quarter note B4, a quarter note A4, a quarter note G4, and a quarter note F#4. The piece ends with a double bar line.

34


Exercise 34 is written in 3/4 time. The first staff contains four measures: a half note G4, a quarter note A4, a quarter note B4, a quarter note C5, a quarter note B4, a quarter note A4, a quarter note G4, and a quarter note F#4. The second staff contains four measures: a quarter note G#4, a quarter note A4, a quarter note B4, a quarter note C5, a quarter note B4, a quarter note A4, a quarter note G4, and a quarter note F#4. The piece ends with a double bar line.

35.

Exercise 35 is written in 2/4 time. The first staff contains four measures: a half note G4, a half note A4, a half note B4, a half note C5, a half note B4, a half note A4, a half note G4, and a half note F#4. The second staff contains four measures: a quarter note G#4, a quarter note A4, a quarter note B4, a quarter note C5, a quarter note B4, a quarter note A4, a quarter note G4, and a quarter note F#4. The piece ends with a double bar line.

36.

Exercise 36 is written in 2/4 time. The first staff contains four measures: a half note G4, a half note A4, a half note B4, a half note C5, a half note B4, a half note A4, a half note G4, and a half note F#4. The second staff contains four measures: a quarter note G#4, a quarter note A4, a quarter note B4, a quarter note C5, a quarter note B4, a quarter note A4, a quarter note G4, and a quarter note F#4. The piece ends with a double bar line.

37.  Musical notation for exercise 37, measures 1-4. The first staff is in 3/4 time and contains measures 1-4. The second staff contains measures 5-8. The key signature has one sharp (F#). Measure 4 features a triplet of eighth notes. Measure 8 ends with a double bar line.

38.  Musical notation for exercise 38, measures 1-4. The first staff is in 2/4 time and contains measures 1-4. The second staff contains measures 5-8. The key signature has one sharp (F#). Measure 8 ends with a double bar line.

39.  Musical notation for exercise 39, measures 1-4. The first staff is in 3/4 time and contains measures 1-4. The second staff contains measures 5-8. The key signature has one sharp (F#). Measure 8 ends with a double bar line.

40.  Musical notation for exercise 40, measures 1-4. The first staff is in 2/4 time and contains measures 1-4. The second staff contains measures 5-8. The key signature has one sharp (F#). Measure 6 features a triplet of eighth notes. Measure 8 ends with a double bar line.

41.

Exercise 41 consists of two staves in 2/4 time. The first staff contains four measures: a quarter note G4, a quarter note A4, an eighth note B4, and a quarter note G4. The second staff contains four measures: a quarter note G4, a quarter note A4, a quarter note B4, and a quarter note C5. The third measure of the second staff includes a triplet of eighth notes (B4, A4, G4) marked with a '3' above the notes.

42.

Exercise 42 consists of two staves in 2/4 time. The first staff contains four measures: a quarter note G4, a quarter note A4, a quarter note B4, and a quarter note C5. The second staff contains four measures: a quarter note G4, a quarter note A4, a quarter note B4, and a quarter note C5. The third measure of the second staff includes a triplet of eighth notes (B4, A4, G4) marked with a '3' above the notes.

43.

Exercise 43 consists of two staves in 2/4 time. The first staff contains four measures: a quarter note G4, a quarter note A4, a quarter note B4, and a quarter note C5. The second staff contains four measures: a quarter note G4, a quarter note A4, a quarter note B4, and a quarter note C5. The third measure of the second staff includes a triplet of eighth notes (B4, A4, G4) marked with a '3' above the notes.

44.

Exercise 44 consists of two staves in 2/4 time. The first staff contains four measures: a quarter note G4, a quarter note A4, a quarter note B4, and a quarter note C5. The second staff contains four measures: a quarter note G4, a quarter note A4, a quarter note B4, and a quarter note C5. The third measure of the second staff includes a triplet of eighth notes (B4, A4, G4) marked with a '3' above the notes.

45.

Exercise 45 consists of two measures. The first measure contains a dotted quarter note, an eighth note, a quarter note, and a half note. The second measure contains a quarter note, an eighth note, a quarter note, and a half note. The key signature has one sharp (F#) and the time signature is 2/4.

46.

Exercise 46 consists of two measures. The first measure contains a dotted quarter note, an eighth note, a quarter note, and a half note. The second measure contains a quarter note, an eighth note, a quarter note, and a half note. The key signature has one sharp (F#) and the time signature is 2/4.

47.

Exercise 47 consists of two measures. The first measure contains a dotted quarter note, an eighth note, a quarter note, and a half note. The second measure contains a quarter note, an eighth note, a quarter note, and a half note. The key signature has one sharp (F#) and the time signature is 2/4.

48.

Exercise 48 consists of two measures. The first measure contains a dotted quarter note, an eighth note, a quarter note, and a half note. The second measure contains a quarter note, an eighth note, a quarter note, and a half note. The key signature has one sharp (F#) and the time signature is 2/4.

49.

Exercise 49 consists of two measures in 3/4 time. Measure 1 contains a half note G4, a quarter note A4, and a quarter note B4. Measure 2 contains an eighth note C5, an eighth note B4, a quarter note A4, an eighth note G4, and a quarter note F#4. The second system contains two measures. Measure 1 contains an eighth note G4, an eighth note F#4, a quarter note E4, and a quarter rest. Measure 2 contains an eighth note D#4, an eighth note C#4, a quarter note B3, and a quarter note A3. The third system contains two measures. Measure 1 contains a quarter note G4, a quarter note A4, and a triplet of eighth notes B4, C5, and B4. Measure 2 contains a quarter note A4, a quarter note G4, and a half note F#4. The exercise ends with a double bar line.

50.

Exercise 50 consists of two measures in 3/4 time. Measure 1 contains a half note G4, a quarter note A4, and a quarter note B4. Measure 2 contains a half note C5, a quarter note B4, and a quarter note A4. The second system contains two measures. Measure 1 contains a quarter note G4, a quarter note A4, and a triplet of eighth notes B4, C5, and B4. Measure 2 contains a quarter note A4, a quarter note G4, and a half note F#4. The exercise ends with a double bar line.

51.

Exercise 51 consists of two measures in 2/4 time. Measure 1 contains a half note G4, a quarter note A4, and a quarter note B4. Measure 2 contains a half note C5, a quarter note B4, and a quarter note A4. The second system contains two measures. Measure 1 contains a quarter rest, a quarter note G4, a quarter note A4, and a quarter note B4. Measure 2 contains a triplet of eighth notes C5, B4, and A4, followed by a quarter note G4. The exercise ends with a double bar line.

52.

Exercise 52 consists of two measures in 2/4 time. Measure 1 contains a half note G4, a quarter note A4, and a quarter note B4. Measure 2 contains a half note C5, a quarter note B4, and a quarter note A4. The second system contains two measures. Measure 1 contains a quarter note G4, a quarter note A4, and a triplet of eighth notes B4, C5, and B4. Measure 2 contains a quarter note A4, a quarter note G4, and a half note F#4. The exercise ends with a double bar line.

53.

Exercise 53 consists of two staves in 3/4 time. The first staff contains four measures: a dotted quarter note followed by an eighth note, a quarter note, a half note, a quarter note, a dotted quarter note followed by an eighth note, a quarter note, a half note, and a quarter note with a sharp sign. The second staff contains five measures: a dotted quarter note followed by an eighth note, a quarter note, a half note, a triplet of eighth notes, a dotted quarter note followed by an eighth note, a quarter note with a sharp sign, a quarter note, a half note, and a dotted half note.

54.

Exercise 54 consists of two staves in 3/4 time. The first staff contains four measures: a quarter note, a dotted quarter note, a quarter note, a half note, a quarter note, a dotted quarter note followed by an eighth note, a quarter note, and a half note. The second staff contains five measures: a quarter note, a dotted quarter note, a quarter note, a triplet of eighth notes, a quarter note with a sharp sign, a quarter note, a dotted quarter note followed by an eighth note, a quarter note with a sharp sign, a quarter note, and a dotted half note.

55.

Exercise 55 consists of two staves in 3/4 time. The first staff contains four measures: a dotted quarter note followed by an eighth note, a quarter note, a half note, a quarter note, a dotted quarter note followed by an eighth note, a quarter note with a sharp sign, a quarter note, and a dotted half note. The second staff contains five measures: a quarter note, a dotted quarter note followed by an eighth note, a quarter note with a sharp sign, a quarter note, a dotted quarter note followed by an eighth note, a quarter note, a half note, a quarter note with a sharp sign, a quarter note, and a dotted half note.

56.

Exercise 56 consists of two staves in 3/4 time. The first staff contains four measures: a dotted quarter note followed by an eighth note, a quarter note, a half note, a quarter note, a dotted quarter note followed by an eighth note, a quarter note with a sharp sign, a quarter note, and a dotted half note. The second staff contains five measures: a dotted quarter note followed by an eighth note, a quarter note, a half note, a quarter note, a dotted quarter note followed by an eighth note, a quarter note, a half note, a quarter note, a dotted half note, and a dotted half note.

57.

Exercise 57 consists of two staves in 2/4 time. The first staff contains measures 1 through 4. Measure 1 has a quarter note C4, an eighth note D4, and a beamed eighth-note pair E4-F4. Measure 2 has a dotted quarter note E4 and an eighth note D4. Measure 3 has an eighth note C4, a beamed eighth-note pair D4-E4, and a quarter note F4. Measure 4 has a dotted quarter note E4 and an eighth note D4. The second staff contains measures 5 through 8. Measure 5 has a quarter note C4, an eighth note D4, and a beamed eighth-note pair E4-F4. Measure 6 has a dotted quarter note E4 and an eighth note D4. Measure 7 has an eighth note C4, a beamed eighth-note pair D4-E4, and a quarter note F4. Measure 8 has a dotted quarter note E4 and an eighth note D4, followed by a double bar line.

58.

Exercise 58 consists of two staves in 2/4 time. The first staff contains measures 1 through 4. Measure 1 has a quarter note C4, an eighth note D4, and a beamed eighth-note pair E4-F4. Measure 2 has a dotted quarter note E4 and an eighth note D4. Measure 3 has an eighth note C4, a beamed eighth-note pair D4-E4, and a quarter note F4. Measure 4 has a dotted quarter note E4 and an eighth note D4. The second staff contains measures 5 through 8. Measure 5 has a quarter note C4, an eighth note D4, and a beamed eighth-note pair E4-F4. Measure 6 has a dotted quarter note E4 and an eighth note D4. Measure 7 has an eighth note C4, a beamed eighth-note pair D4-E4, and a quarter note F4. Measure 8 has a dotted quarter note E4 and an eighth note D4, followed by a double bar line.

59.

Exercise 59 consists of two staves in 2/4 time. The first staff contains measures 1 through 4. Measure 1 has a quarter note C4, an eighth note D4, and a beamed eighth-note pair E4-F4. Measure 2 has a dotted quarter note E4 and an eighth note D4. Measure 3 has an eighth note C4, a beamed eighth-note pair D4-E4, and a quarter note F4. Measure 4 has a dotted quarter note E4 and an eighth note D4. The second staff contains measures 5 through 8. Measure 5 has a quarter note C4, an eighth note D4, and a beamed eighth-note pair E4-F4. Measure 6 has a dotted quarter note E4 and an eighth note D4. Measure 7 has an eighth note C4, a beamed eighth-note pair D4-E4, and a quarter note F4. Measure 8 has a dotted quarter note E4 and an eighth note D4, followed by a double bar line.

60.

Exercise 60 consists of two staves in 2/4 time. The first staff contains measures 1 through 4. Measure 1 has a quarter note C4, an eighth note D4, and a beamed eighth-note pair E4-F4. Measure 2 has a dotted quarter note E4 and an eighth note D4. Measure 3 has an eighth note C4, a beamed eighth-note pair D4-E4, and a quarter note F4. Measure 4 has a dotted quarter note E4 and an eighth note D4. The second staff contains measures 5 through 8. Measure 5 has a quarter note C4, an eighth note D4, and a beamed eighth-note pair E4-F4. Measure 6 has a dotted quarter note E4 and an eighth note D4. Measure 7 has an eighth note C4, a beamed eighth-note pair D4-E4, and a quarter note F4. Measure 8 has a dotted quarter note E4 and an eighth note D4, followed by a double bar line.



61.

Exercise 61 consists of two staves in 3/4 time. The first staff begins with a treble clef and a key signature of one sharp (F#). The melody starts on G4, moves to A4, then B4, and continues with eighth and quarter notes. A triplet of eighth notes (G4, A4, B4) is marked with a '3' above it. The second staff continues the melody with eighth and quarter notes, ending with a double bar line.

62.

Exercise 62 consists of two staves in 3/4 time. The first staff begins with a treble clef and a key signature of one sharp (F#). The melody starts on G4, moves to A4, then B4, and continues with eighth and quarter notes. A triplet of eighth notes (G4, A4, B4) is marked with a '3' above it. The second staff continues the melody with eighth and quarter notes, ending with a double bar line.

63.

Exercise 63 consists of two staves in 3/4 time. The first staff begins with a treble clef and a key signature of one sharp (F#). The melody starts on G4, moves to A4, then B4, and continues with eighth and quarter notes. A triplet of eighth notes (G4, A4, B4) is marked with a '3' above it. The second staff continues the melody with eighth and quarter notes, ending with a double bar line.

64.

Exercise 64 consists of two staves in 3/4 time. The first staff begins with a treble clef and a key signature of one sharp (F#). The melody starts on G4, moves to A4, then B4, and continues with eighth and quarter notes. A triplet of eighth notes (G4, A4, B4) is marked with a '3' above it. The second staff continues the melody with eighth and quarter notes, ending with a double bar line.

65.

Exercise 65 is in 3/4 time. The first staff contains four measures: a dotted quarter note, an eighth note, a quarter note, and a half note. The second staff contains four measures: a dotted quarter note, an eighth note, a quarter note, and a half note. The third staff contains four measures: a dotted quarter note, an eighth note, a quarter note, and a half note. The fourth staff contains four measures: a dotted quarter note, an eighth note, a quarter note, and a half note. The exercise concludes with a double bar line.

66.

Exercise 66 is in 3/4 time. The first staff contains four measures: a dotted quarter note, an eighth note, a quarter note, and a half note. The second staff contains four measures: a dotted quarter note, an eighth note, a quarter note, and a half note. The third staff contains four measures: a dotted quarter note, an eighth note, a quarter note, and a half note. The fourth staff contains four measures: a dotted quarter note, an eighth note, a quarter note, and a half note. The exercise concludes with a double bar line.

67.

Exercise 67 is in 2/4 time. The first staff contains four measures: a dotted quarter note, an eighth note, a quarter note, and a half note. The second staff contains four measures: a dotted quarter note, an eighth note, a quarter note, and a half note. The third staff contains four measures: a dotted quarter note, an eighth note, a quarter note, and a half note. The fourth staff contains four measures: a dotted quarter note, an eighth note, a quarter note, and a half note. The exercise concludes with a double bar line.

68.

Exercise 68 is in 2/4 time. The first staff contains four measures: a dotted quarter note, an eighth note, a quarter note, and a half note. The second staff contains four measures: a dotted quarter note, an eighth note, a quarter note, and a half note. The third staff contains four measures: a dotted quarter note, an eighth note, a quarter note, and a half note. The fourth staff contains four measures: a dotted quarter note, an eighth note, a quarter note, and a half note. The exercise concludes with a double bar line.

69.

Exercise 69 consists of two staves in 3/4 time. The first staff contains four measures: a dotted quarter note, an eighth note, a quarter note, a dotted quarter note, an eighth note, a quarter note, a dotted quarter note, and a half note. The second staff contains four measures: a dotted quarter note, an eighth note, a quarter note, a dotted quarter note, an eighth note, a quarter note, a dotted quarter note, and a half note. A triplet of eighth notes is marked in the third measure of the second staff.

70.

Exercise 70 consists of two staves in 3/4 time. The first staff contains four measures: a dotted quarter note, an eighth note, a quarter note, a dotted quarter note, an eighth note, a quarter note, a dotted quarter note, and a half note. The second staff contains four measures: a dotted quarter note, an eighth note, a quarter note, a dotted quarter note, an eighth note, a quarter note, a dotted quarter note, and a half note. A triplet of eighth notes is marked in the third measure of the second staff.

71.

Exercise 71 consists of two staves in 3/4 time. The first staff contains four measures: a dotted quarter note, an eighth note, a quarter note, a dotted quarter note, an eighth note, a quarter note, a dotted quarter note, and a half note. The second staff contains four measures: a dotted quarter note, an eighth note, a quarter note, a dotted quarter note, an eighth note, a quarter note, a dotted quarter note, and a half note. A triplet of eighth notes is marked in the third measure of the second staff.

72.

Exercise 72 consists of two staves in 3/4 time. The first staff contains four measures: a dotted quarter note, an eighth note, a quarter note, a dotted quarter note, an eighth note, a quarter note, a dotted quarter note, and a half note. The second staff contains four measures: a dotted quarter note, an eighth note, a quarter note, a dotted quarter note, an eighth note, a quarter note, a dotted quarter note, and a half note. A triplet of eighth notes is marked in the third measure of the second staff.

73.

Exercise 73 is in 2/4 time. The first staff contains four measures: a half note G4, a quarter note A4, a quarter note B4, and a quarter note C5. The second staff contains four measures: a quarter note D5, a quarter note E5, a quarter note F5, and a quarter note G5. The third staff contains four measures: a quarter note A5, a quarter note B5, a quarter note C6, and a quarter note D6. The fourth staff contains four measures: a quarter note E6, a quarter note F6, a quarter note G6, and a quarter note A6. The piece ends with a double bar line.

74.

Exercise 74 is in 3/4 time. The first staff contains four measures: a half note G4, a quarter note A4, a quarter note B4, and a quarter note C5. The second staff contains four measures: a quarter note D5, a quarter note E5, a quarter note F5, and a quarter note G5. The third staff contains four measures: a quarter note A5, a quarter note B5, a quarter note C6, and a quarter note D6. The fourth staff contains four measures: a quarter note E6, a quarter note F6, a quarter note G6, and a quarter note A6. The piece ends with a double bar line.

75.

Exercise 75 is in 3/4 time. The first staff contains four measures: a half note G4, a quarter note A4, a quarter note B4, and a quarter note C5. The second staff contains four measures: a quarter note D5, a quarter note E5, a quarter note F5, and a quarter note G5. The third staff contains four measures: a quarter note A5, a quarter note B5, a quarter note C6, and a quarter note D6. The fourth staff contains four measures: a quarter note E6, a quarter note F6, a quarter note G6, and a quarter note A6. The piece ends with a double bar line.

76.

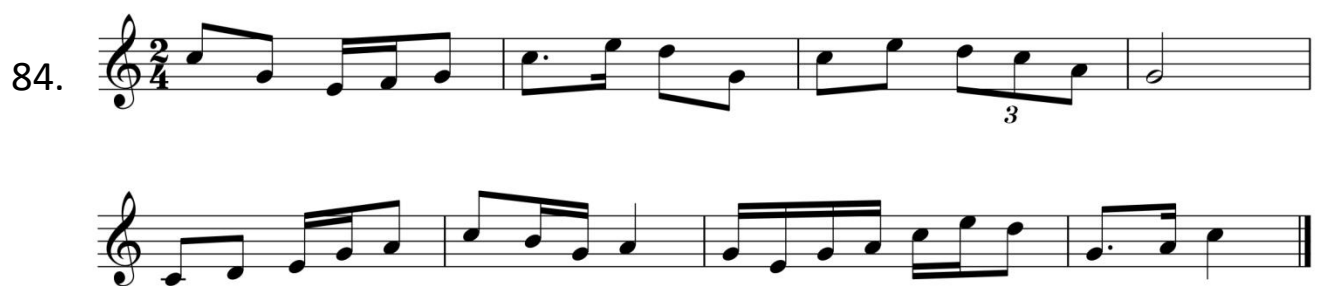
Exercise 76 is in 3/4 time. The first staff contains four measures: a half note G4, a quarter note A4, a quarter note B4, and a quarter note C5. The second staff contains four measures: a quarter note D5, a quarter note E5, a quarter note F5, and a quarter note G5. The third staff contains four measures: a quarter note A5, a quarter note B5, a quarter note C6, and a quarter note D6. The fourth staff contains four measures: a quarter note E6, a quarter note F6, a quarter note G6, and a quarter note A6. The piece ends with a double bar line.



81. 

82. 

83. 

84. 

85.

Exercise 85 consists of two staves in 3/4 time. The first staff contains measures 1 through 4. Measure 1 has a quarter note G4, an eighth note A4, and a quarter note B4. Measure 2 has a quarter rest, an eighth note A4, a quarter note G4, an eighth note F#4, and a quarter note E4. Measure 3 has a quarter note D4, an eighth note C4, and a quarter note B3. Measure 4 has a half note A3. The second staff contains measures 5 through 8. Measure 5 has a quarter note G3, an eighth note F#3, and a quarter note E3. Measure 6 has a quarter note D3, an eighth note C3, and a quarter note B2. Measure 7 has a triplet of eighth notes D3, E3, and F#3, followed by a quarter note G3. Measure 8 has a quarter note F#3, an eighth note E3, and a half note D3.

86.

Exercise 86 consists of two staves in 2/4 time. The first staff contains measures 1 through 4. Measure 1 has a quarter note G4, an eighth note A4, and a quarter note B4. Measure 2 has a quarter note A4, an eighth note G#4, and a quarter note F#4. Measure 3 has a quarter note E4, an eighth note D4, and a quarter note C4. Measure 4 has a half note B3. The second staff contains measures 5 through 8. Measure 5 has a quarter note A3, an eighth note G3, and a quarter note F#3. Measure 6 has a quarter note E3, an eighth note D3, and a quarter note C#3. Measure 7 has a quarter note B2, an eighth note A2, and a quarter note G#2. Measure 8 has a half note F#2.

87.

Exercise 87 consists of two staves in 3/4 time. The first staff contains measures 1 through 4. Measure 1 has a quarter note G4, an eighth note A4, and a quarter note B4. Measure 2 has a quarter note A4, an eighth note G4, and a quarter note F#4. Measure 3 has a quarter note E4, an eighth note D4, and a quarter note C4. Measure 4 has a half note B3. The second staff contains measures 5 through 8. Measure 5 has a quarter note A3, an eighth note G3, and a quarter note F#3. Measure 6 has a quarter note E3, an eighth note D3, and a quarter note C#3. Measure 7 has a quarter note B2, an eighth note A2, and a quarter note G#2. Measure 8 has a half note F#2.

88.

Exercise 88 consists of two staves in 2/4 time. The first staff contains measures 1 through 4. Measure 1 has a quarter note G4, an eighth note A4, and a quarter note B4. Measure 2 has a quarter note A4, an eighth note G#4, and a quarter note F#4. Measure 3 has a quarter note E4, an eighth note D4, and a quarter note C4. Measure 4 has a half note B3. The second staff contains measures 5 through 8. Measure 5 has a quarter note A3, an eighth note G3, and a quarter note F#3. Measure 6 has a quarter note E3, an eighth note D3, and a quarter note C#3. Measure 7 has a quarter note B2, an eighth note A2, and a quarter note G#2. Measure 8 has a half note F#2.

89.

Exercise 89 consists of two staves in 3/4 time. The first staff begins with a treble clef and a key signature of one sharp (F#). The melody starts on G4, moves to A4, then B4, and ends on G4. The second staff continues the melody, starting on F#4, moving to E4, D4, and ending on C4. There is a triplet of eighth notes in the first staff: G4, A4, B4.

90.

Exercise 90 consists of two staves in 3/4 time. The first staff begins with a treble clef and a key signature of one sharp (F#). The melody starts on G4, moves to A4, then B4, and ends on G4. The second staff continues the melody, starting on F#4, moving to E4, D4, and ending on C4. There is a triplet of eighth notes in the second staff: G4, A4, B4.

91.

Exercise 91 consists of two staves in 3/4 time. The first staff begins with a treble clef and a key signature of one sharp (F#). The melody starts on G4, moves to A4, then B4, and ends on G4. The second staff continues the melody, starting on F#4, moving to E4, D4, and ending on C4. There is a triplet of eighth notes in the first staff: G4, A4, B4.

92.

Exercise 92 consists of two staves in 3/4 time. The first staff begins with a treble clef and a key signature of one sharp (F#). The melody starts on G4, moves to A4, then B4, and ends on G4. The second staff continues the melody, starting on F#4, moving to E4, D4, and ending on C4. There is a triplet of eighth notes in the first staff: G4, A4, B4.



93.

Exercise 93 consists of two staves in 2/4 time. The first staff begins with a treble clef and a key signature of one sharp (F#). It contains four measures: the first has a quarter note G4 and an eighth note A4; the second has an eighth note G4, a quarter note F#4, and an eighth note E4; the third has a triplet of eighth notes (F#4, G4, A4) followed by a quarter note B4; the fourth has a half note C5. The second staff contains four measures: the first has a quarter note G4 and an eighth note A4; the second has a quarter rest followed by an eighth note G4, a quarter note F#4, and an eighth note E4; the third has an eighth note G4, a quarter note F#4, and an eighth note E4; the fourth has a half note C5.

94.

Exercise 94 consists of two staves in 3/4 time. The first staff begins with a treble clef and a key signature of one sharp (F#). It contains four measures: the first has a quarter note G4 and an eighth note A4; the second has an eighth note G4, a quarter note F#4, and an eighth note E4; the third has a quarter note D5 and an eighth note C5; the fourth has a half note B4 with a triplet of eighth notes (A4, G4, F#4) above it. The second staff contains four measures: the first has an eighth note G4, a quarter note F#4, and an eighth note E4; the second has an eighth note G4, a quarter note F#4, and an eighth note E4; the third has a quarter note D5 and an eighth note C5; the fourth has a half note B4.

95.

Exercise 95 consists of two staves in 3/4 time. The first staff begins with a treble clef and a key signature of one sharp (F#). It contains four measures: the first has an eighth note G4, a quarter note F#4, and an eighth note E4; the second has an eighth note G4, a quarter note F#4, and an eighth note E4; the third has an eighth note G4, a quarter note F#4, and an eighth note E4; the fourth has a quarter note D5 and an eighth note C5 with a triplet of eighth notes (B4, A4, G4) above it. The second staff contains four measures: the first has an eighth note G4, a quarter note F#4, and an eighth note E4; the second has an eighth note G4, a quarter note F#4, and an eighth note E4; the third has an eighth note G4, a quarter note F#4, and an eighth note E4; the fourth has a half note B4.

96.

Exercise 96 consists of two staves in 2/4 time. The first staff begins with a treble clef and a key signature of one sharp (F#). It contains four measures: the first has a quarter note G4 and an eighth note A4; the second has a quarter note F#4 and an eighth note E4; the third has a quarter note D5 and an eighth note C5; the fourth has a quarter note B4 and an eighth note A4. The second staff contains four measures: the first has a quarter note G4 and an eighth note A4; the second has a triplet of eighth notes (F#4, G4, A4) above it; the third has an eighth note G4, a quarter note F#4, and an eighth note E4; the fourth has a half note C5.

97.

Exercise 97 consists of two staves in 3/4 time. The first staff begins with a half note G4, followed by a quarter note A4, a quarter rest, and a quarter note B4. The second staff begins with a half note C5, followed by a quarter note B4, a quarter note A4, and a quarter note G4. The piece concludes with a double bar line.

98.

Exercise 98 consists of two staves in 3/4 time. The first staff begins with a half note G4, followed by a quarter note A4, a quarter note B4, and a quarter note C5. The second staff begins with a half note D5, followed by a quarter note C5, a quarter note B4, and a quarter note A4. The piece concludes with a double bar line.

99.

Exercise 99 consists of two staves in 3/4 time. The first staff begins with a half note G4, followed by a quarter note A4, a quarter note B4, and a quarter note C5. The second staff begins with a half note D5, followed by a quarter note C5, a quarter note B4, and a quarter note A4. The piece concludes with a double bar line.

100.

Exercise 100 consists of two staves in 3/4 time. The first staff begins with a half note G4, followed by a quarter note A4, a quarter note B4, and a quarter note C5. The second staff begins with a half note D5, followed by a quarter note C5, a quarter note B4, and a quarter note A4. The piece concludes with a double bar line.